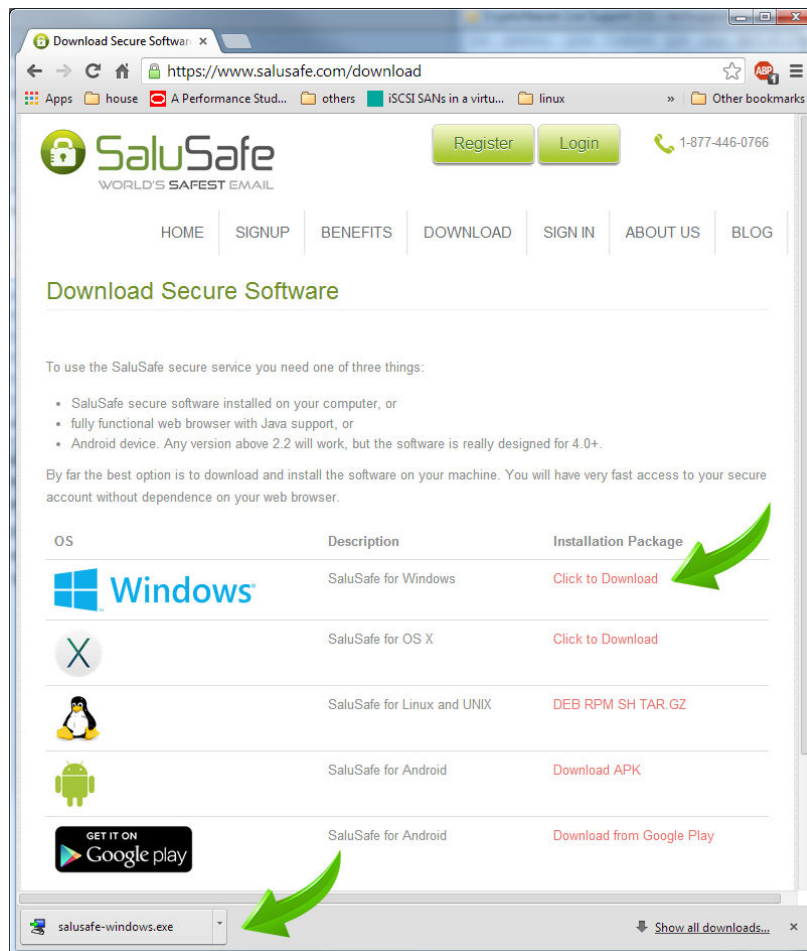
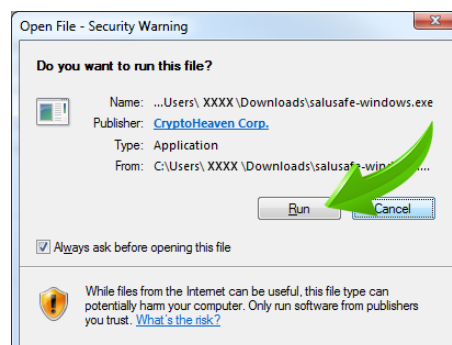


## Downloading the Application to your Computer

Proceed to the download site: <https://www.SaluSafe.com/download> and click on the **Download** link. The link will cause the installation package to be downloaded to your computer.



Depending on your web browser you will be asked if you want to run or open the file. You may also be warned that the installation package is an executable and “may harm” your computer. The installation package is safe to run so accept the message. Here is a message that appears in Chrome.



Select "Run" to start the software installation.

You may now be asked another security question by Windows. Accept the request and allow the installation to proceed.

**OS X notice:** see the OS X Installation section.

The installation wizard will now start and you will see this window:



Proceed by clicking the **Next** button. You will be asked for confirmation of the defaults. Select the **Next** button on the three subsequent screens and allow the installation to finish. When the installation is finished the software will run and the login screen will be displayed:



If you were assigned a login name and a password, then enter the assigned information on this page and click Login. If you were not assigned the login name and have an activation code, then proceed to the next section.

## Creating a New Account

On the login page click the **New Account** button and proceed. The Create New Account window is now displayed. This is where you enter your desired login name and your desired password.

Register

 **SaluSafe**  
WORLD'S SAFEST EMAIL  
Copyright 2001-2013 CryptoHeaven Corp

Username:

Unique Password:

Re-type Password:

Current Email Address:

[Proxy](#) [Change server](#)

Remember my Username on this computer.

Advanced Options:

Please read and indicate your acceptance of the License Agreement by marking "I Accept" below.

I Accept

Key Generation will take approximately 2 seconds.

 This software implements high grade cryptography. Accounts without a valid password are not recoverable! Optional password recovery features are available in your account area.

1. Enter what you want to be your login name. This can be anything you like, for example "john.smith" works well.
2. Enter your desired password. The more complex the password the better, but make sure you can remember it.
3. On the Activation Code line, paste in the activation code by using the Ctrl+V key combination, or just type it in. Make sure to double check it as it is case sensitive.
4. Click the **"I Accept"** checkmark to indicate you agree to the license agreement and then press the **Create** button on the bottom of the window.

Your account is now created and you are taken to the main App window.

## Mobile App

In addition to the full desktop application we also provide you with a simple to use mobile app.

Install the app straight from the Google Play store. Search for SaluSafe and login with your login name and password. If you don't want to or cannot use the Play store, download the app from our web site:

<https://www.salusafe.com/download>

## **OS X Installation**

When installing on OS X proceed exactly as on Windows, with the exception that you must first download the application to your computer and then hold down the Control key while double clicking the installation package.